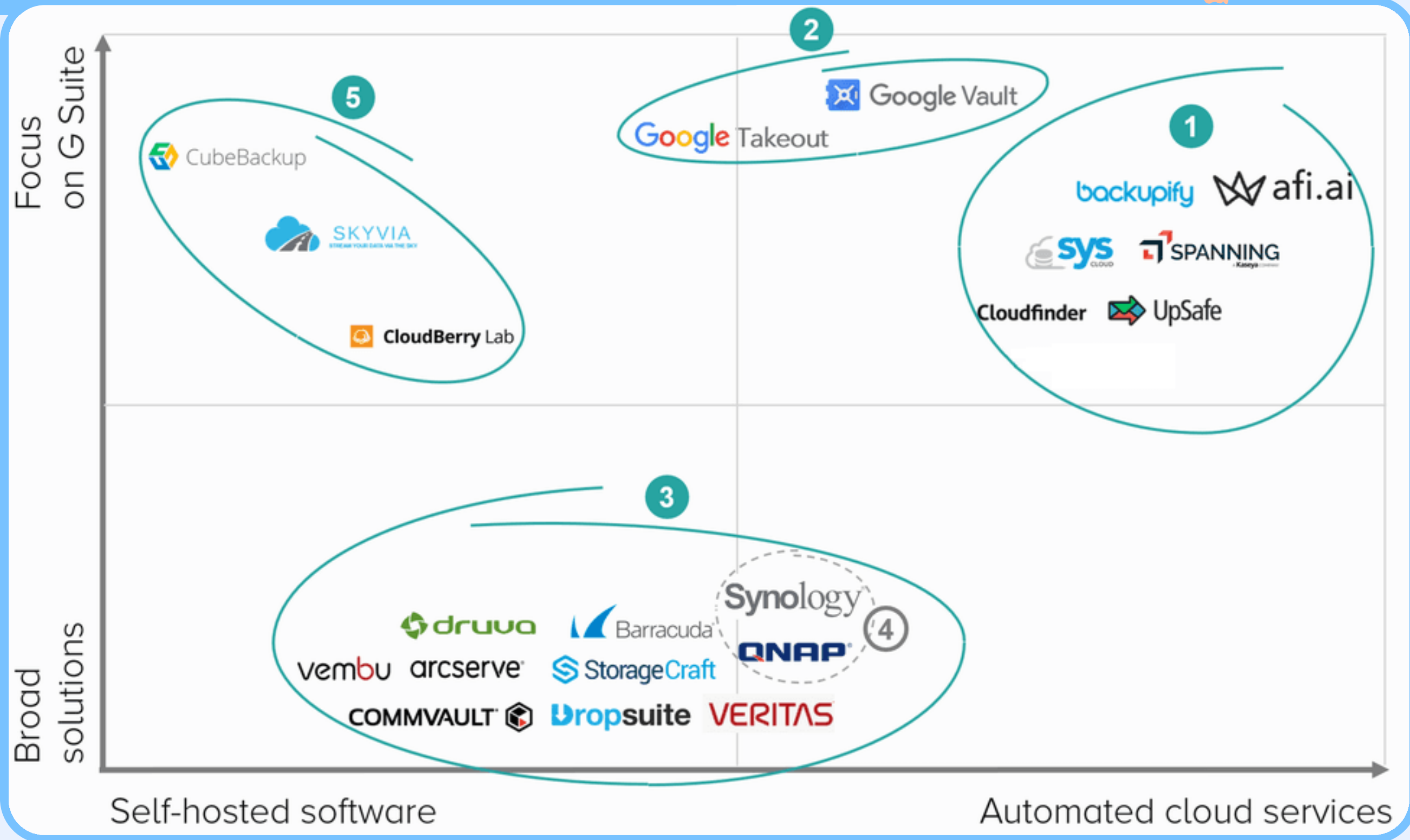


How Important are BACKUPS for Google Workspace?

Why Backup your Google Workspace environment?

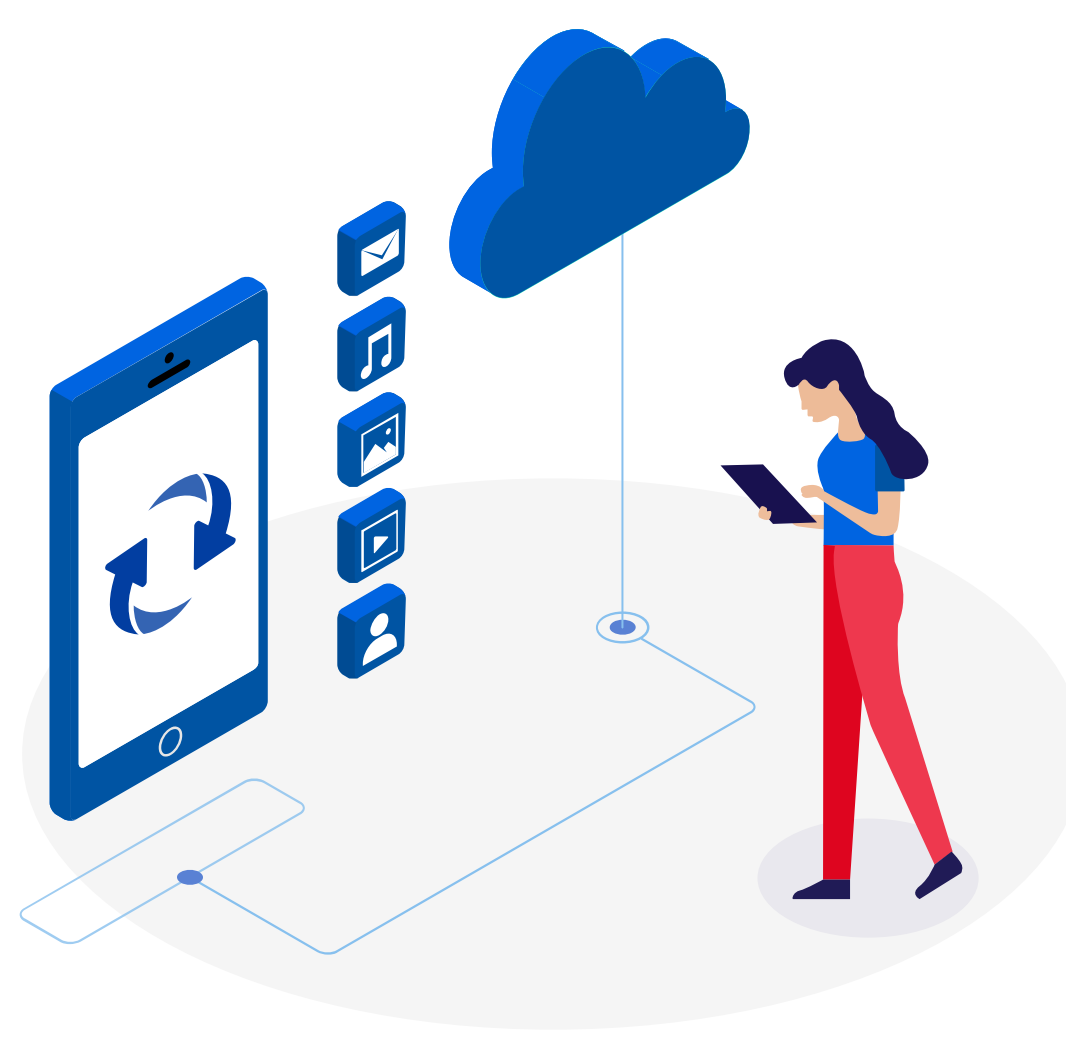
According to Gartner more than 40% of organisations using Google Workspace have installed and use a 3rd party backup solution in order to protect their data. This percentage increases when we look at organisations with more than 50+ users.

Google Workspace Backup Landscape



1. Cloud-based backup services

Cloud-based backup solutions provide a fully managed backup service of your Google Workspace including vendor-hosted backup management and cloud storage. As these offerings are hosted in the cloud, backup operations have no impact on the local network and have no requirements for local storage capacity/network bandwidth.



2. Google recovery tools



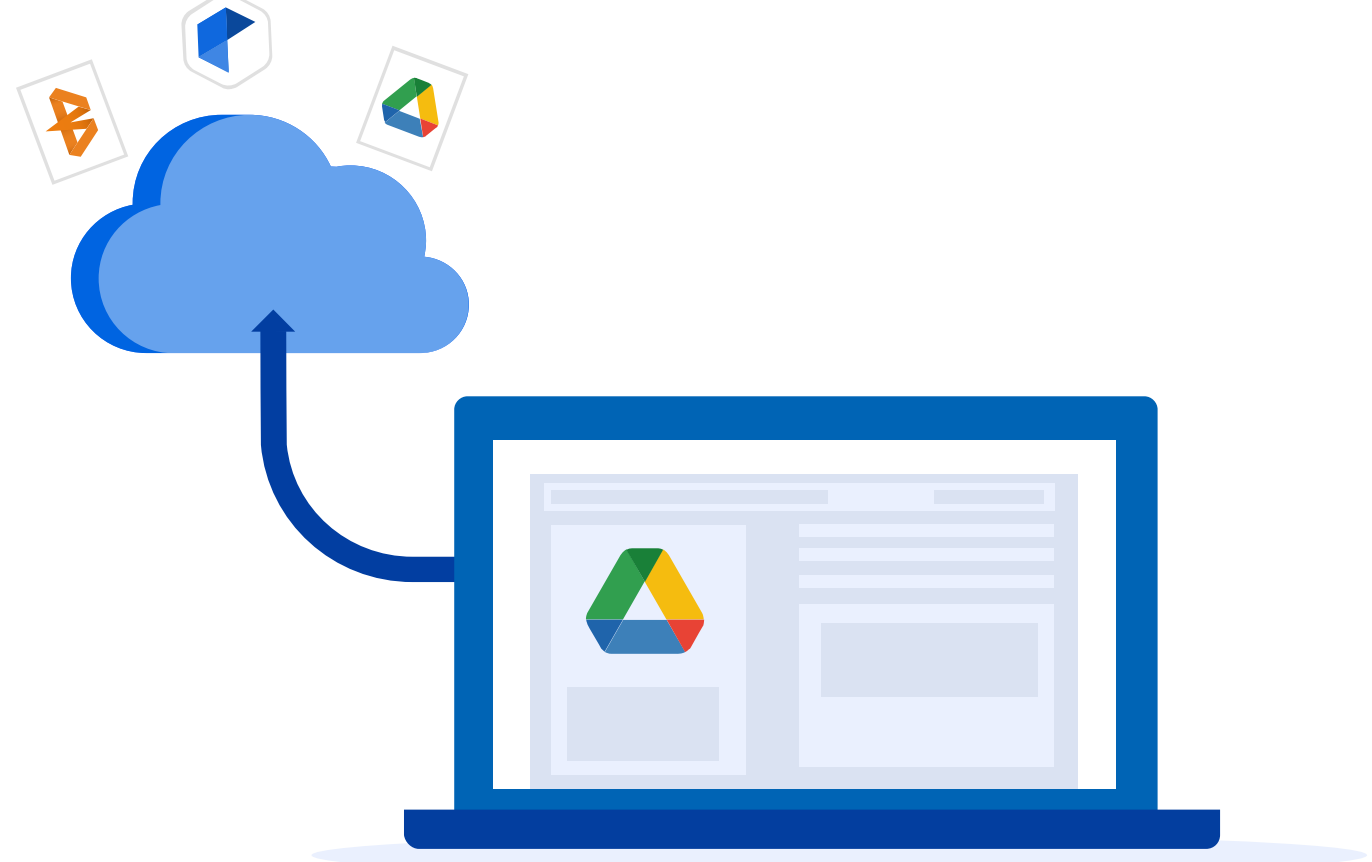
Google provides tools that can help retain Google Workspace user data using Google Vault and Google Takeout. Both tools help retain Google Workspace data and export it offline, however, they do not have any recovery capabilities in order to restore data back to Google Workspace.

3. Traditional backup software

There is a broad spectrum of traditional backup solutions that support Google Workspace. However these solutions typically only provide partial support of Google Workspace (e.g. no OU structure, sharing permissions or Google Workspace calendar, Gmail labels etc.).



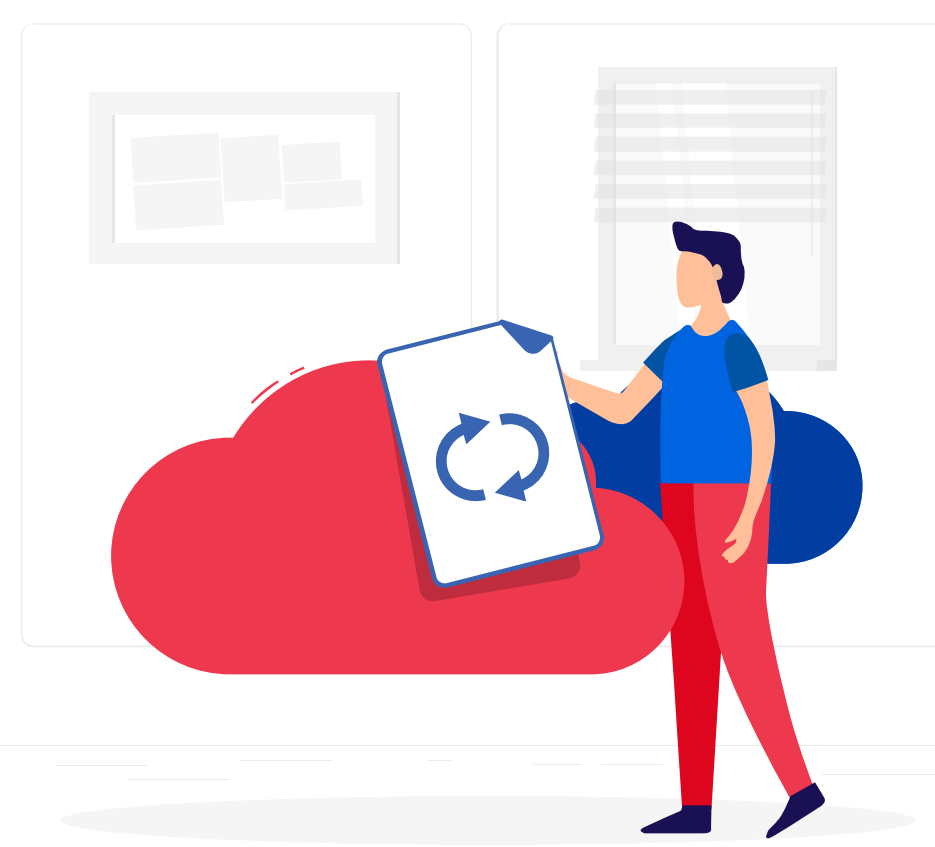
4. Hardware Appliances



NAS/SAN storage devices that can take regular backups of Google Workspace and store them locally. Similarly to traditional backup software vendors these are focused on server backup and provide limited support for Google Workspace.

5. Local backups for Google Workspace

These tools are focused on Google Workspace and other SaaS apps protection and don't provide a fully managed cloud service. Customers need to install, maintain, host and manage the backup software and storage. Although the price of the software is lower than the price of the cloud-based backup solutions, the total cost of ownership for such solutions will typically exceed that of fully managed cloud services.



The following chart shows 7 of the most popular Google Workspace (G Suite) backup solutions and how they compared when backing up and restoring from a test domain containing 80 users and 20 Shared (Team) Drives and 2TB of total storage.

